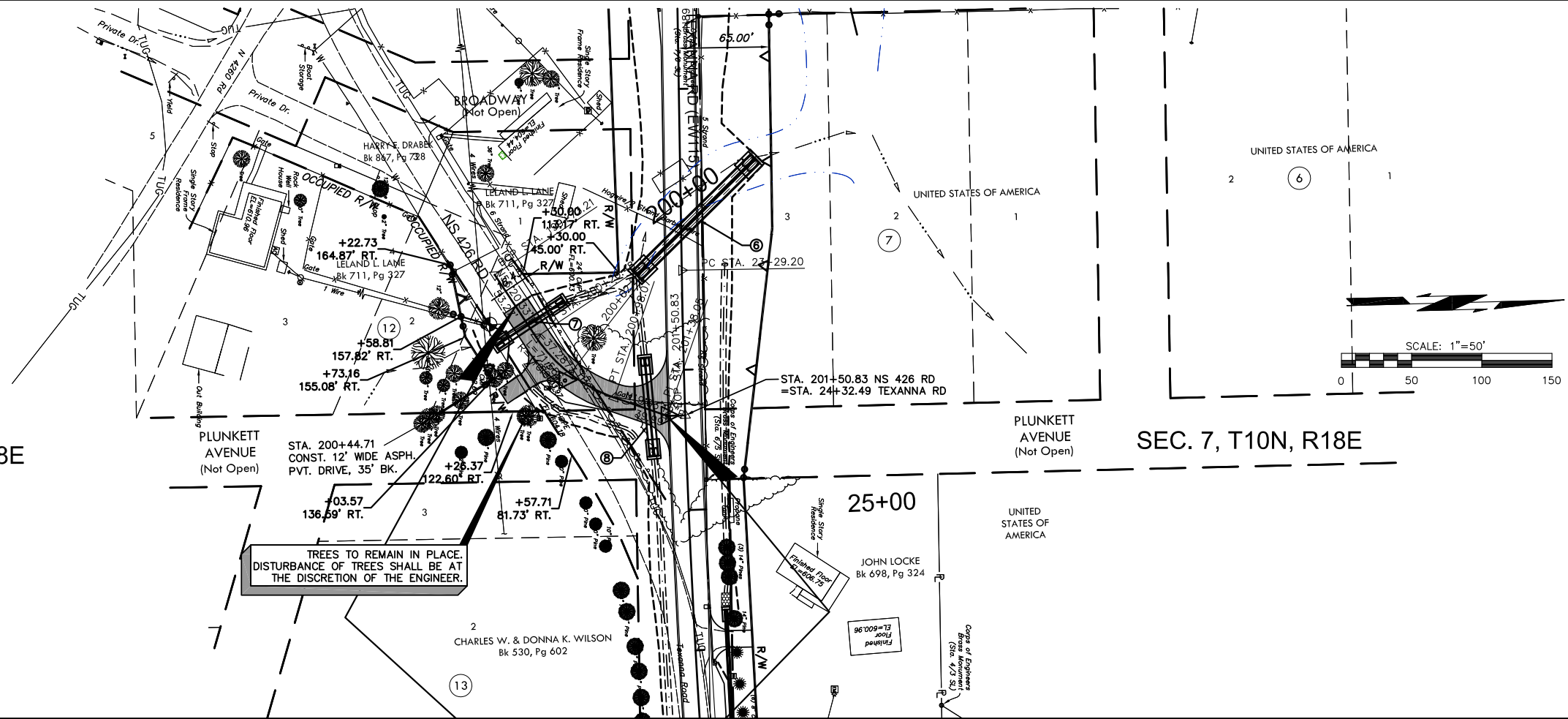


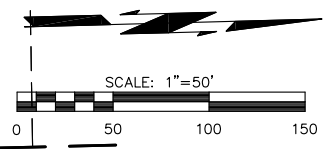
NOTE: THE RADII ALONG THE INTERSECTION OF NS-426 RD AND TEXANNA ROAD ARE 25'.



SEC. 18, T10N, R18E

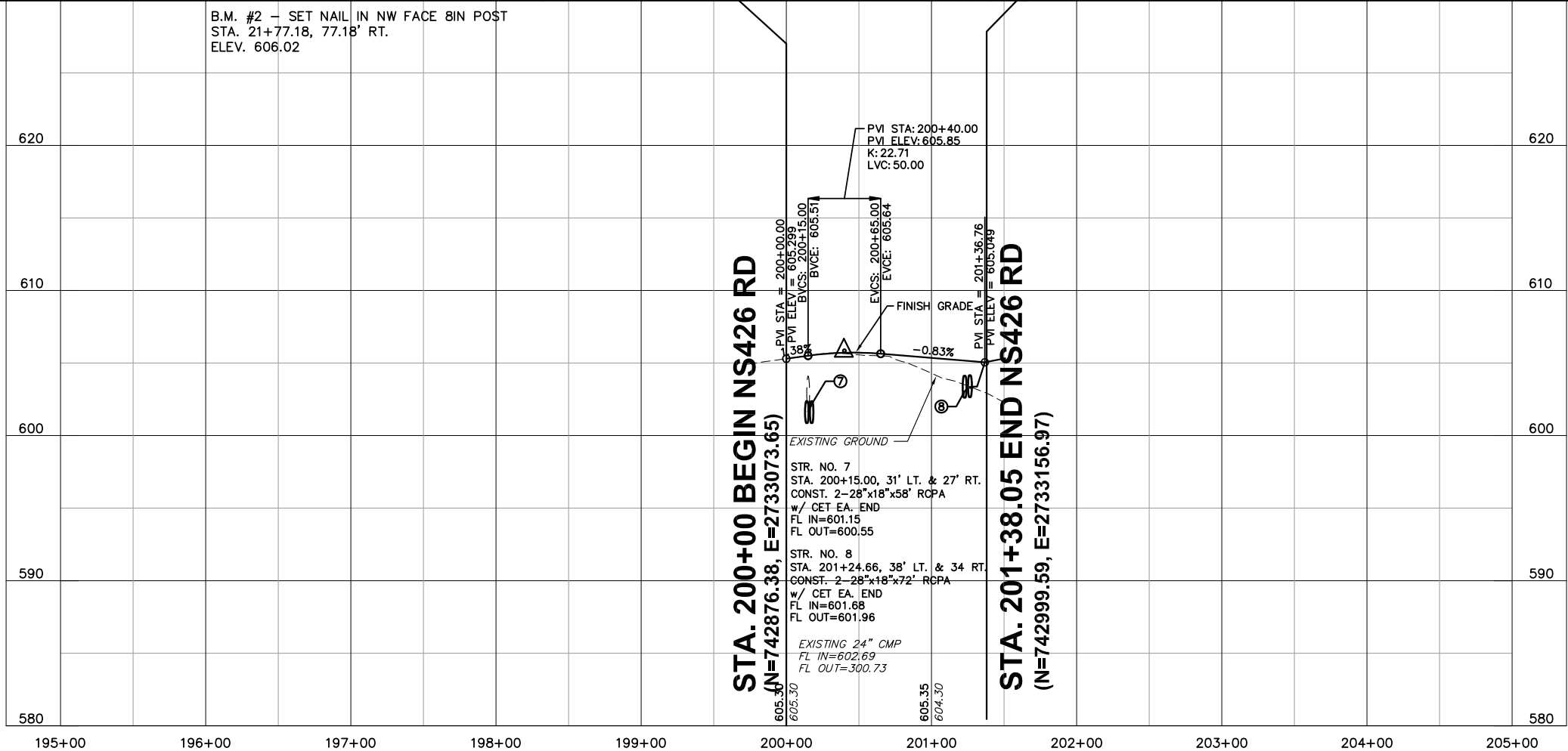
SEC. 7, T10N, R18E

UNITED STATES OF AMERICA



NOTE: ALL DIMENSIONS ARE MEASURED TO MAINLINE C.R.L.

TREES TO REMAIN IN PLACE. DISTURBANCE OF TREES SHALL BE AT THE DISCRETION OF THE ENGINEER.



STA. 200+00 BEGIN NS426 RD
(N=742876.38, E=2733073.65)

STA. 201+38.05 END NS426 RD
(N=742999.59, E=2733156.97)

PLOTTED: Friday, August 11, 2017 @ 11:45AM
 m:\p04-cad2-1 - msh04m-10252\Drawings\A24_Plan & Profile (NS426 RD).dgn